

Silvestre Hat

Designed by Julia Alen

Sizes: -Average adults-

Size 1: to 17 inches in circumference

Size 2: to 19 inches in circumference

Materials

- 100% Acrylic Wool (approximately 65 grams)
- US 7 (4mm) Pointed Needle
- US 8 (5mm) Pointed Needle
- Cable Needle
- Tapestry Needle
- 3 Stitch Marker

Gauge: 18 stitches and 26 rows = 4 inches in Stockinette Stitch.

Adjust needle size to obtain the correct gauge

Abbreviations

CO - cast On

K - knit

P - purl

C2 over 2 Right - Slip 2 sts to CN, hold to back, K2, K2 from CN

C2 over 2 Left - Slip 2 sts to CN, hold to front, K2, K2 from CN

K2tog – Knit two together

SSK - slip the the first and second stitch knitwise, one at a time, then insert left hand needle in front of these 2 sts and knit them together

PM - Place Marker

K1P1 ribbing:

1° Row (RS): *K1, P1* repeat to end.

2° Row (WS): *P1, K1* repeat to end.

This pattern is for personal use only. If you have any suggestions or have detected any mistakes, please feel free to email me at contact@tejerbien.com
www.guiaparatejerbien.com ©All rights reserved



Silvestre Hat

Designed by Julia Alen

Sizes: -Average adults-

Size 1: to 17 inches in circumference

Size 2: to 19 inches in circumference

Materials

- 100% Acrylic Wool (approximately 65 grams)
- US 7 (4mm) Pointed Needle
- US 8 (5mm) Pointed Needle
- Cable Needle
- Tapestry Needle
- 3 Stitch Marker

Gauge: 18 stitches and 26 rows = 4 inches in Stockinette Stitch.

Adjust needle size to obtain the correct gauge

Abbreviations

CO - cast On

K - knit

P - purl

C2 over 2 Right - Slip 2 sts to CN, hold to back, K2, K2 from CN

C2 over 2 Left - Slip 2 sts to CN, hold to front, K2, K2 from CN

K2tog - Knit two together

SSK - slip the the first and second stitch knitwise, one at a time, then insert left hand needle in front of these 2 sts and knit them together

PM - Place Marker

K1P1 ribbing:

1° Row (RS): *K1, P1* repeat to end.

2° Row (WS): *P1, K1* repeat to end.

Instructions

Size 1: CO 96 stitches on 8 US pointed needle and work 4 rows in K1P1 ribbing.

Size 2: CO 104 stitches on 7 US pointed needle and work 4 rows in K1P1 ribbing. Switch to larger needle (8US).

Work cable pattern as follows (both sizes):

Row 1: K all.

Row 2: P all.

Row 3: *C2 over 2 Right, C2 over 2 Left* repeat to end.

Row 4 and all even number of rows: P all.

Row 5 and 7: K all.

Row 9: *C2 over 2 Left, C2 over 2 Right* repeat to end.

Row 11 and 13: K all.

Row 15 : *C2 over 2 Right, C2 over 2 Left* repeat to end.

Row 17 and 19: K all.

Row 21: *C2 over 2 Right, C2 over 2 Left* repeat to end.

Row 23 and 25: K all.

Row 27: *C2 over 2 Right, C2 over 2 Left* repeat to end.

Row 29: k24, PM, K24, PM, K24, PM, K24. (You have now marked your four points of decreasing).

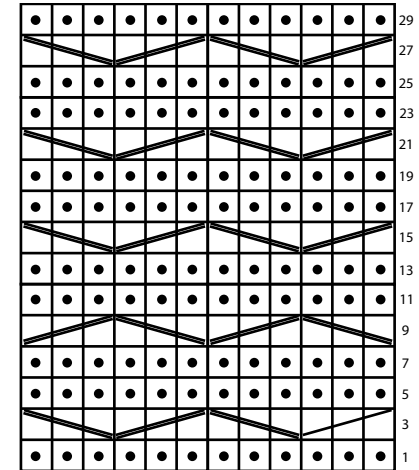
Crown Decreases

Row 1: K2tog, *K until 2 sts remain before next marker, SSK, Slip Marker, K2tog* (3 times), K until 2 sts remain in row, SSK.

Row 2: P all.

Repeat last two rows until 8 sts remain on needle.

Cable Chart:	
Purl all even number of rows.	
●	knit
	C2 over 2 Left - Slip 2 sts to CN, hold to front, K2, K2 from CN
	C2 over 2 Right - Slip 2 sts to CN, hold to back, K2, K2 from CN



Break yarn leaving a 8" tail. Weave tail through live stitches and tighten. Weave in ends.

Sew in ends and block as necessary.

Break yarn leaving a 6" tail. Weave tail through live stitches and tighten. Weave in ends.



This pattern is for personal use only. If you have any suggestions or have detected any mistakes, please feel free to email me at contact@tejerbien.com www.guiaparatejerbien.com ©All rights reserved